



▶ MT 48

AUDIO INTERFACE

- Quick Guide
- Kurzanleitung
- Guide de démarrage rapide
- Guida rapida
- Instrucciones resumidas
- Instruções resumidas
- Beknopte handleiding
- Krótka instrukcja obsługi
- Snabbguide
- Kort vejledning
- Pikaohje
- Γρήγορος οδηγός
- Kısa Kılavuz
- 快速指南
- クイックガイド
- 퀵 가이드



Specifications		Microphone Inputs 1 - 2 (Combo)	
Connector type		Combo locking Neutrik XLR / TRS	
Dynamic range		136 dB / 129 dB (A-weighted, typ.)	
Max. input level Mic Pad -24 dB / Mic Pad -12 dB / Mic Pad off		+24 dBu / +12 dBu / +0 dBu	
Frequency response +0/-0.2dB @ fs = 48 kHz		9 Hz - 22 kHz	
Frequency response +0/-3dB @ fs = 96 kHz		9 Hz - 46 kHz	
Frequency response +0/-3dB @ fs = 192 kHz		11 Hz - 94 kHz	
THD+N Preamp + A/D 1 kHz @ 0 dBFS		< -110 dB (0.0003%)	
Interchannel crosstalk @ 1 kHz		< -130 dB	
Equivalent input noise Mic / Mic Lift (150 Ω Source)		< -125 dBu / -128 dBu (A-weighted, typ.)	
Common mode rejection rate (20 Hz - 20 kHz)		> 80 dB (up to 0 dBu)	
Input impedance		~ 5 kΩ / ~ 10 kΩ (single-ended / differential)	
Gain range (software controlled)		+66 dB	
Gain step coarse / fine		0.5 dB / 0.1 dB	
Phantom power (software switchable per channel)		+48 V	
Phase reverse (software switchable per channel)		Yes	
Low cut filter (software switchable per channel)		-12 dB/octave, 60 Hz	
5° low-end in-channel Ø deviation pt: Mic		< 10 Hz	
Interchannel phase 10 Hz - 100 kHz		< ±0.5°	

Specifications		Line Inputs 1 - 2 (Combo)	Instruments / Hi-Z & Line Inputs 3 - 4
Connector type		Combo locking Neutrik XLR / TRS	¼" (6.3 mm) TRS female
Dynamic range		138.5 dB (A-weighted, typ.) (ref +24 dBu)	135 dB (A-weighted, typ.) (ref +18 dBu)
Max. input level		+24 dBu	+18 dBu
Input impedance		~ 5 kΩ / ~ 10 kΩ (single-ended / differential)	~ 1 MΩ / ~ 2 MΩ (single-ended / differential)
Gain range (software controlled)		+66 dB	+66 dB
THD+N Preamp + A/D 1 kHz @ 0 dBFS		< -105 dB (0.0006%)	< -112 dB (0.0003%)
Interchannel crosstalk @ 1 kHz		< -140 dB	< -150 dB
Sensitivity range for 0 dBFS (software contr.)		+24 dBu to -42 dBu	+18 dBu to -48 dBu
Common mode rejection rate (20 Hz - 20 kHz)		> 80 dB (up to 0 dBu)	> 70 dB (up to 0 dBu)
5° low-end in-channel Ø deviation pt:		< 10 Hz	2 Hz
Interchannel phase 10 Hz - 100 kHz		< ±0.5°	< ±0.5°

Specifications		Outputs 1 - 2	Line Outputs 3 - 4
Connector type		Neutrik XLR male	¼" (6.3 mm) TRS female
Dynamic range		123 dB (A-weighted, typ.)	123 dBFS (A-weighted, typ.)
Max. output level (differential/single ended)		+24 dBu (12.2 Vrms) / +18 dBu (6.1 Vrms)	+24 dBu (12.2 Vrms) / +18 dBu (6.1 Vrms)
Frequency response +0/-0.2dB @ fs = 48 kHz		6 Hz - 22 kHz	6 Hz - 22 kHz
Frequency response +0/-3dB @ fs = 96 kHz		2 Hz - 46 kHz	2 Hz - 46 kHz
Frequency response +0/-3dB @ fs = 192 kHz		2 Hz - 92 kHz	2 Hz - 92 kHz
Output impedance		< 70 Ω	< 70 Ω
THD+N 1 kHz @ 0 dBFS		< -110 dB (0.0003%)	< -110 dB (0.0003%)
Output level matching		±0.1 dB	±0.1 dB
Attenuation range (software controlled)		∞ dB to 0 dB	∞ dB to 0 dB
Gain step / precision		0.5 dB / ±0.05 dB	0.5 dB / ±0.05 dB

Specifications		Headphones	
Headphone sockets		2 independent ¼" (6.3 mm) TRS female stereo	
Dynamic range (A-weighted, typ.) high / low		< -122 dB / -117 dB	
Max. output level high / low		16 dBu / 8 dBu	
Frequency response +0/-0.2dB @ fs = 48 kHz		6 Hz - 22 kHz	
Frequency response +0/-3dB @ fs = 96 kHz		2 Hz - 46 kHz	
Frequency response +0/-3dB @ fs = 192 kHz		2 Hz - 92 kHz	
Output impedance		< 70 mΩ	
THD+N 1 kHz @ 0 dBFS high / low		< -108 dB (0.00039%) / < -110 dB (0.0003%)	
Gain range (software controlled)		∞ dB to 0 dB	
Gain step / precision		0.5 dB / ±0.05 dB	

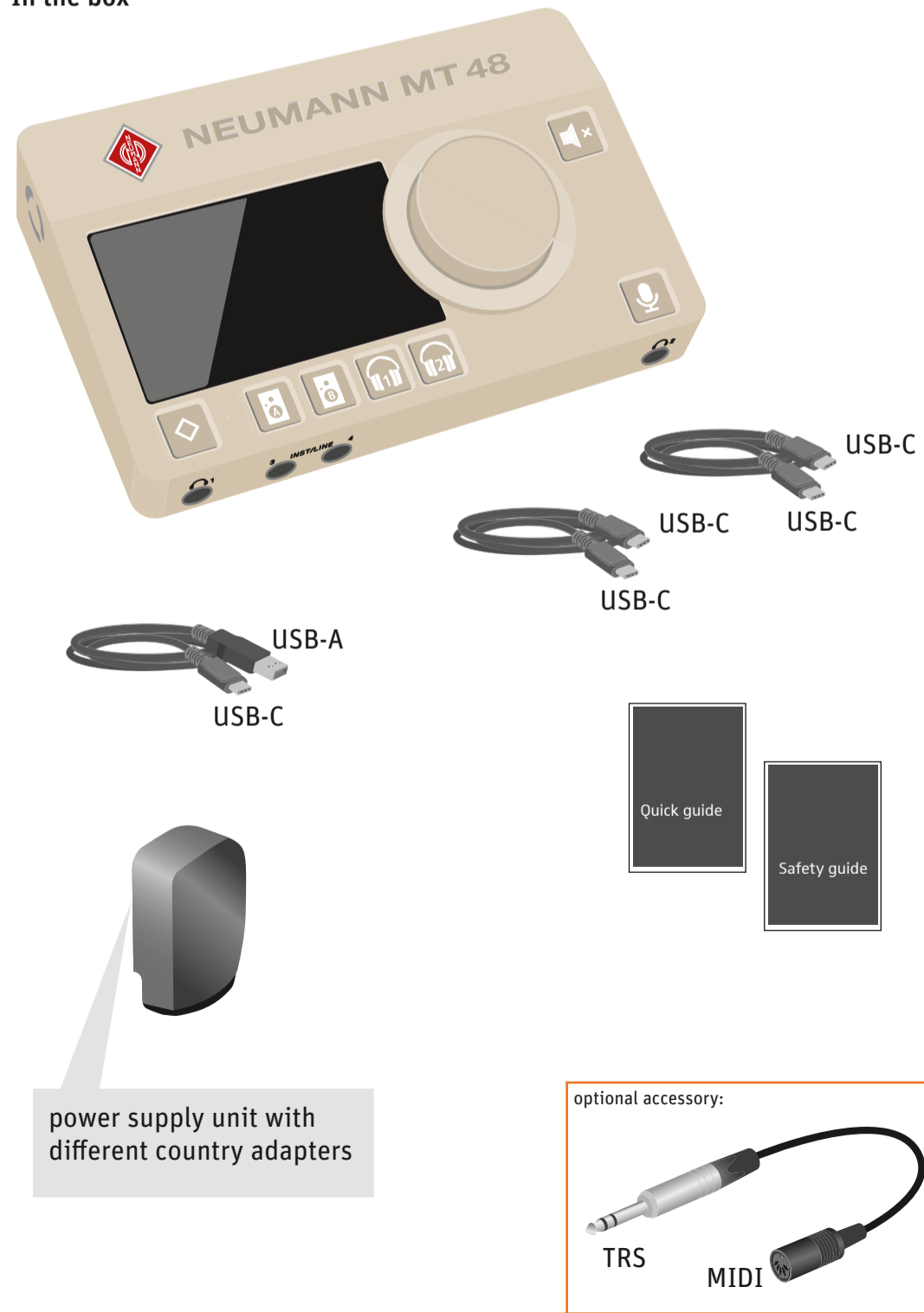
  

Specifications	Complementary I/O	Specifications	General Device
RAVENNA / AES67	Gigabit Ethernet - Standard RJ-45 socket	Top panel display	Capacitive touch, TFT LCD 800 x 480 pixels
USB	USB-C 2.0 High speed interface up to 480 MB/s compatible with USB 2.0 or higher port	Power supply	USB-C - supports USB PD3.0 Revision 2.0 v1.3
Built-in talkback mic	Mono omnidirectional CMOS/MEMS membrane technology	Power consumption	< 25 W
GPIO/MIDI in/out	¼" (6.3 mm) TRS female	Power over Ethernet	IEEE 802.3at (PoE+) class 0 PoE standard
Optical I/O	ADAT physical: 8 in / 8 out @ 44.1 kHz/48 kHz 4 in / 4 out @ 88.2 kHz/96 kHz 2 in / 2 out @ 176.4 kHz/192 kHz	Dimensions	200 x 128 x 40mm
	S/PDIF physical: 2 in / 2 out up to 96 kHz	Weight	950 g
		Temperature range	Operation: 5 - 40 °C (41 - 104 °F) Storage: -40 - +70 °C (-40 - 158 °F)
		Relative humidity	≤ 95 %, non-condensing @ 30 °C
		Housing material	Premium machined and anodized aluminium

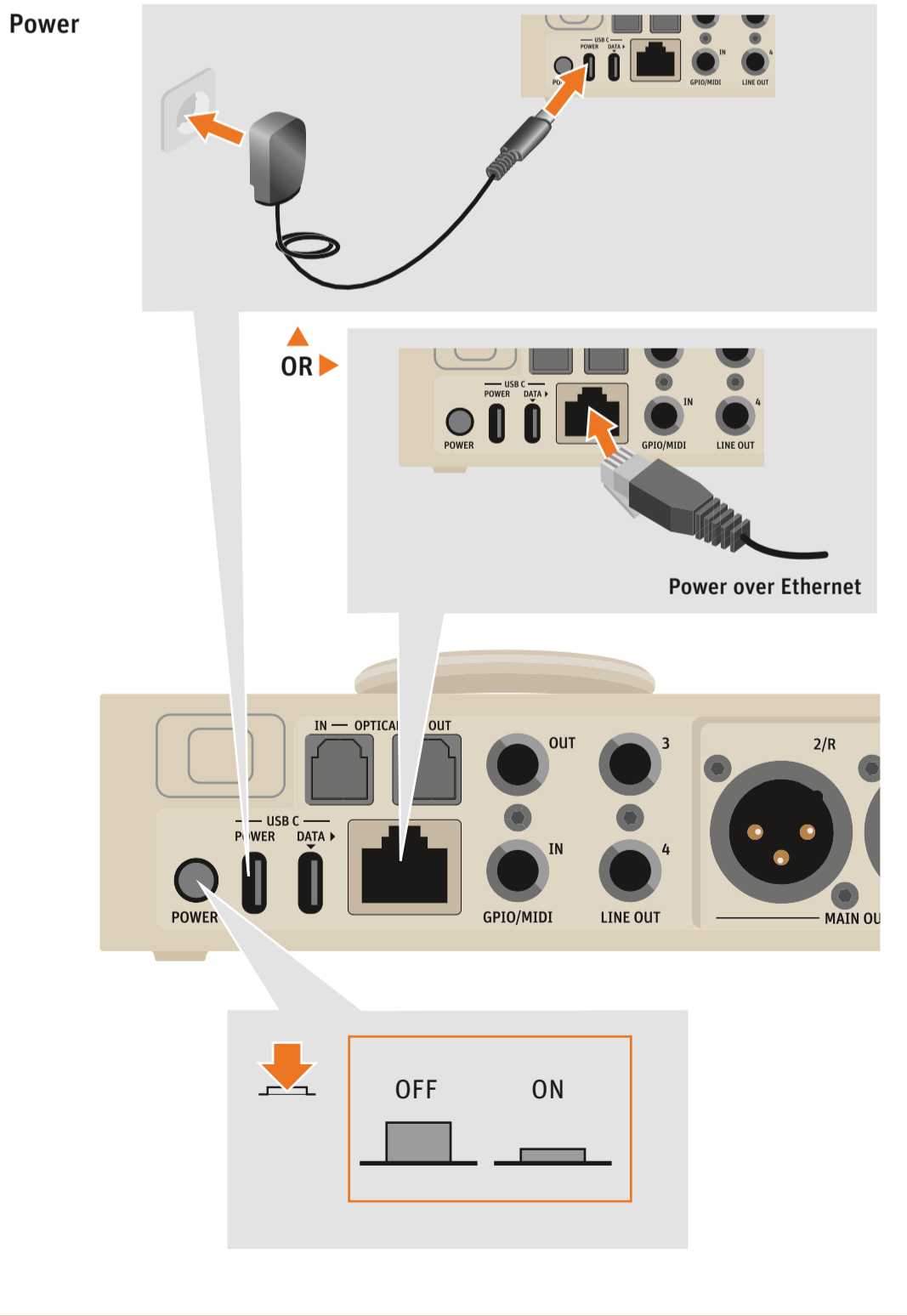
GEORG NEUMANN GMBH · LEIPZIGER STR. 112 · 10117 BERLIN · GERMANY  
TEL +49 (0)30 / 41 77 24 -0 · FAX -50 · HEADOFFICE@NEUMANN.COM · WWW.NEUMANN.COM

PUBLI\_11/22\_592842/A02

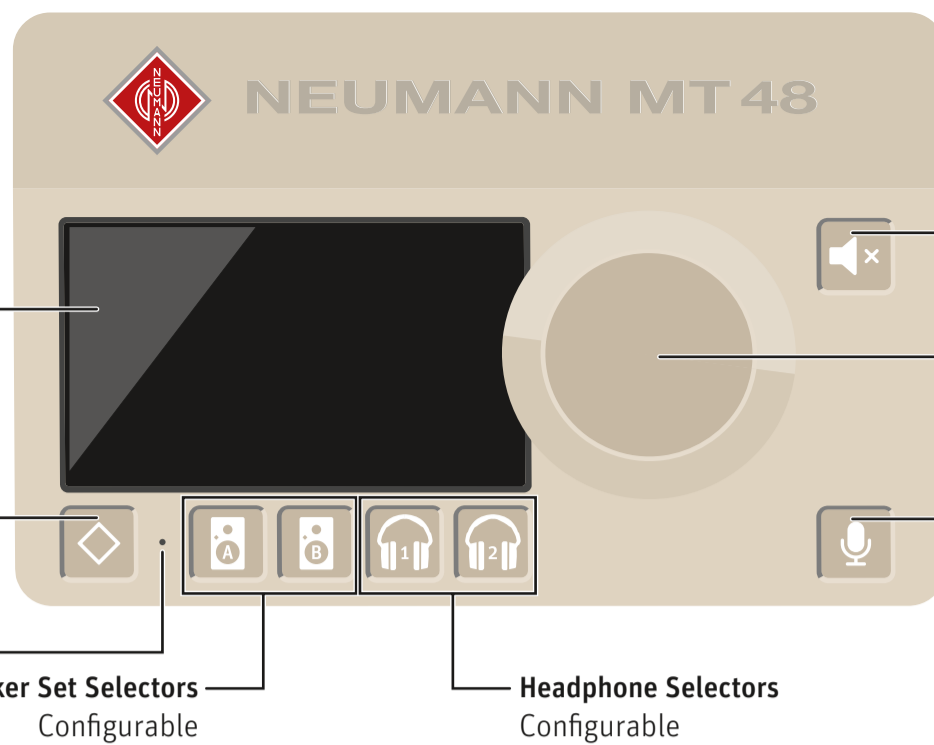
In the box



Power



## Controls



**TFT LCD**  
Multi touch display

**Mute Control**  
Configurable

**Multi-function Rotary Control**  
Volume and gain control/  
Settings

**Talkback Control**  
Configurable

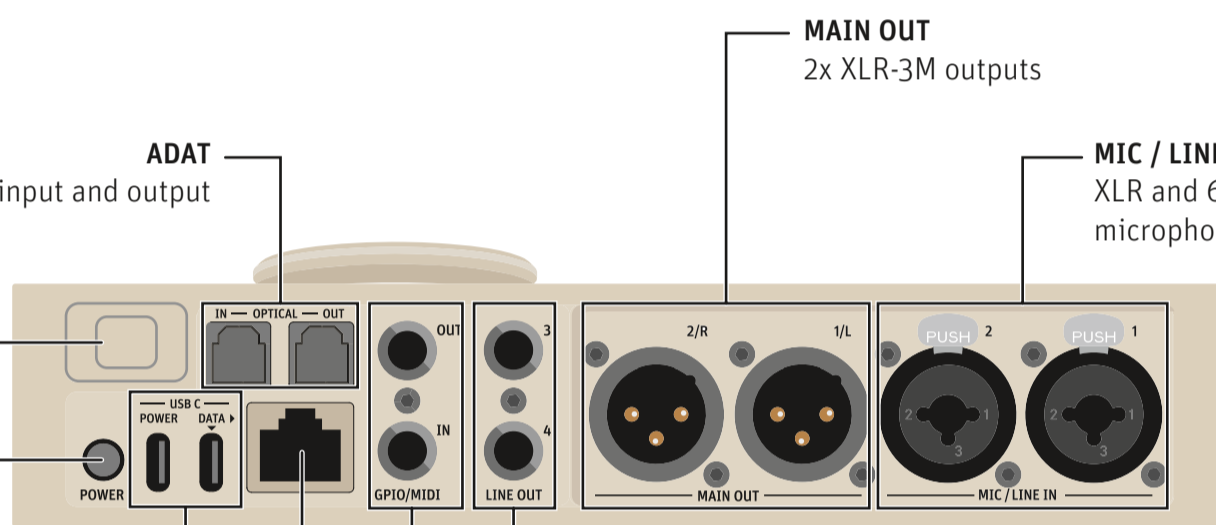
**Home Button**  
Access to main menu  
and settings

**Built-in Microphone**  
Talkback

**Speaker Set Selectors**  
Configurable

**Headphone Selectors**  
Configurable

## Inputs and outputs



**MAIN OUT**  
2x XLR-3M outputs

**MIC / LINE IN**  
XLR and 6.3 mm TRS combo sockets for  
microphone and line signals

**ADAT**  
Optical input and output

**Kensington Lock**  
for optional accessories

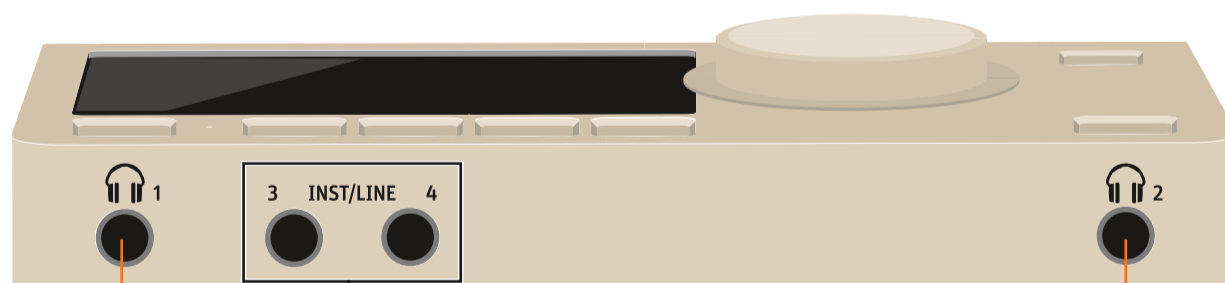
**Power Switch**  
for switching the  
device on and off

**POWER and DATA**  
USB-C sockets for power supply unit  
and data connection  
(use supplied USB cables only)

**LINE OUT**  
2x 6.3 mm TRS outputs

**DATA**  
RJ-45 socket for digital audio (AoIP)  
and optional Power over Ethernet (PoE) supply

**GPIO/MIDI**  
General purpose in and out  
or MIDI in and out



**INST/LINE**  
2x 6.3 mm TRS Hi-Z or Line inputs

